



COMPETITION EQUIPMENTS





COMPETITION EQUIPMENTS

COMPETITION EQUIPMENTS

General Information

399

Starting Block

400

Lane Ropes

402

Roller and Accessories

403

Backstroke and False Indicator

404

Polo Game and Movable bulkhead

405

Swimming Training Equipments

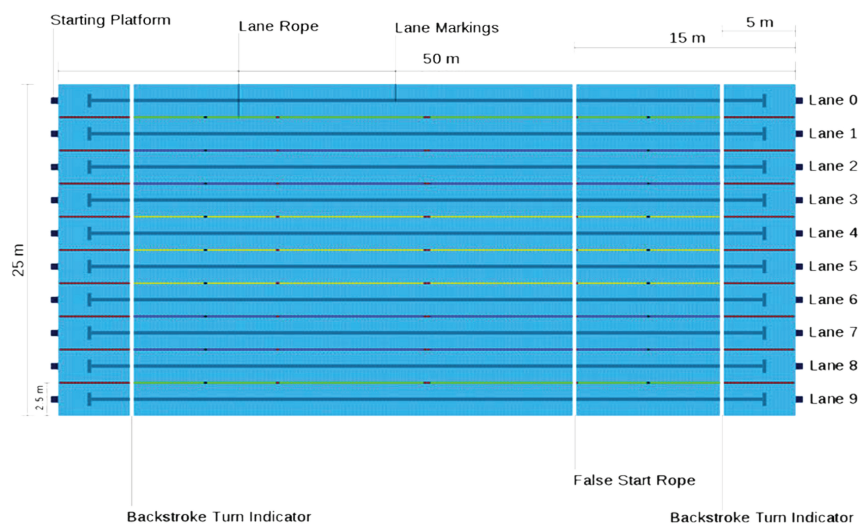
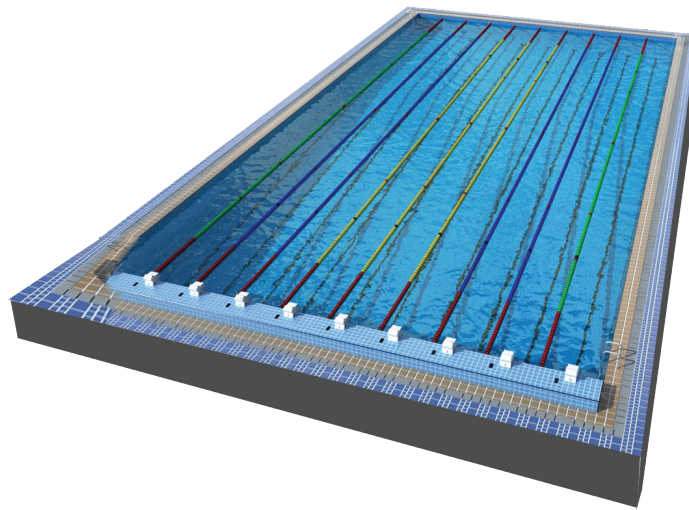
406



Competition Equipments



► General Information



Equipments Used In Competition Pools

Starting Block



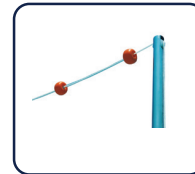
Float Line



Backstroke Indicator



False Start Indicator



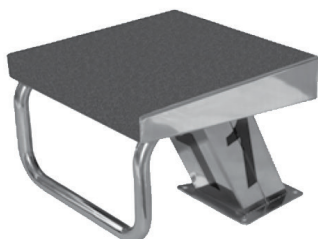
Turning panel with support



Competition Equipments



► Starting Blocks



Starting Block

Totally manufactured in AISI-316L 500x500 mm non slip platform. Numbers not included.

Code	Description	U
00100010	Starting block 400mm Height	x1



Anti wave super Block 800

The Anti wave super block 800 is our premium FINA Approved moveable track block, chosen for top performance training and competition facilities. Height 400 length 800.

Code	Description	U
00100012	Super block 800	x1



Double Step Starting Block

Stainless steel starting block with a nominal height of 700mm with an adjustable, handle and plate support, slip resistant platform in fiberglass. Stainless steel screws and adhesive numbers included.

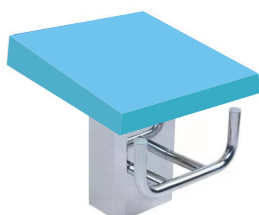
Code	Description	U
00100014	Starting block Double Step	x1



Single Step Strating Block

Stainless steel starting block with a nominal height of 400 mm, with a platform, handle and support plate that is fully adjustable. Platform in slip resistant fiberglass. Electro-polishing treatment to guarantee high, long lasting resistance to corrosion. Adhesive numbers and stainless steel screws included.

Code	Description	U
00100015	Single Step Starting Block	x1



Simplified Low Step Starting Block

Stainless steel starting block with a nominal height of 400 mm with an adjustable, slip resistant platform in fiberglass. Fixed handle. Electro-polish treatment to guarantee high resistance to corrosion. Fastening system inside column. Stainless steel screws and adhesive numbers included.

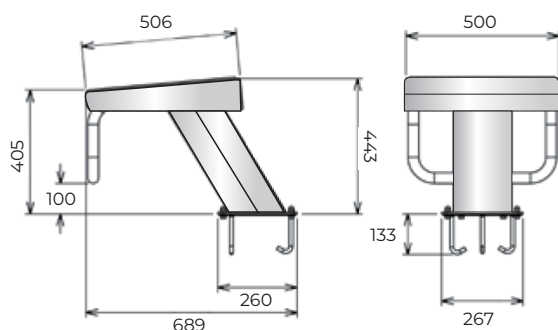
Code	Description	U
00100016	Single Step Starting Block	x1



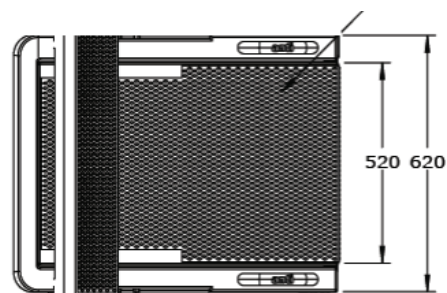
Competition Equipments



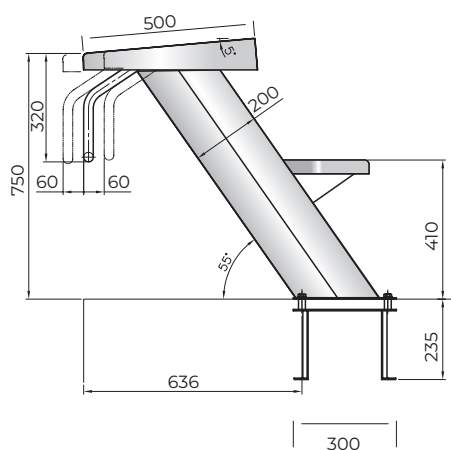
► Starting Blocks Diagram



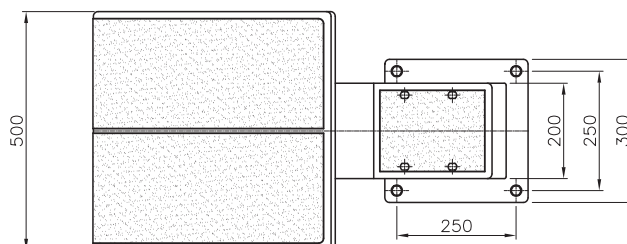
00100010



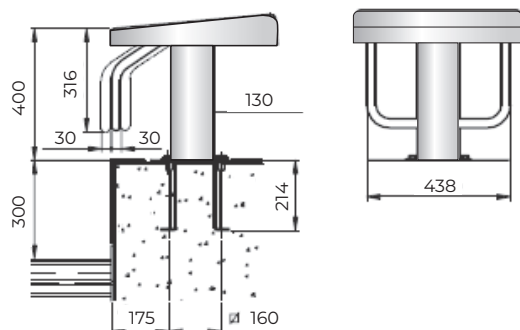
00100012



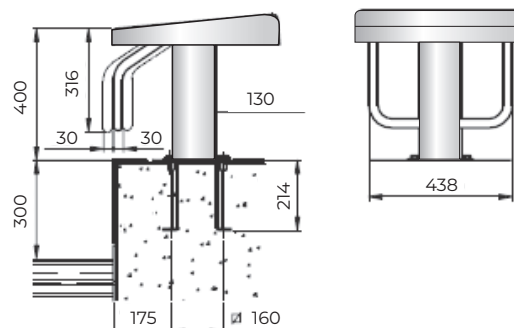
00100014



00100014



00100016



00100015



Competition Equipments



► Lane Ropes



Proteam Europa New Easy Lane

Proteam new easy lane stainless steel 6mm cable with PP disks, in colours red, white yellow, blue and green pursuant to FINA standards. Disks with diameter 89mm (Roma) and 148mm (Moscow).

Code	Description	Cable Length (m)
00100017	Roma 25m	30
00100018	Roma 50m	60
00100019	Moscow 25m	30
00100020	Moscow 50m	60



Proteam Europa Speedy Pool

Proteam Europa SPEEDY POOL stainless steel 18/8 cable with a 4mm diameter (7x7 formation 49 wires), maximum load 980 kg, plasticised, 6mm diameter in transparent PVC, PP disks, in colours red, white yellow, blue and green pursuant to FINA standards. Disks with 120mm diameter.

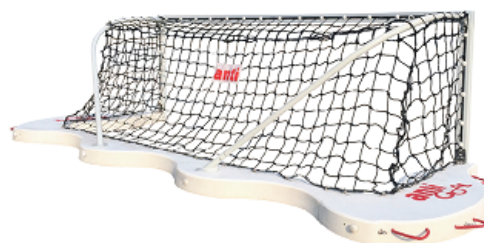
Code	Description	Cable Length (m)
00100021	Speedy 25m	30
00100022	Speedy 50m	60



Caddy Lane Saver

The caddy lane saver provides for safe and quick removal and installation of swimming racing lanes. The caddy lane saver is designed to be quickly installed onto the pool deck and allows for smooth and unhindered movement of lanes that would otherwise be damaged by the sharp pool edge.

Code	Description	Material
AWE013	Caddy lane saver	Reinforced FRP



Anti Pro Goal

Anti pro goal FINA 1080 which is suitable for FINA or equivalent level polo competition event.

Code	Description	Weight	Volume
AWE0331	Anti pro goal 1080	46kg	0.68
AWE0332	Anti pro goal 750	43kg	0.55



Competition Equipments



► Roller and Accessories



Lane Rope Roller

Totally manufactured in AISI-316L.

Code	Description	1200 (mm)	1800 (mm)
00100017	Rome 25 m	2	3
00100018	Rome 50 m	1	2
00100019	Moscow 25 m	2	3
00100020	Moscow 50 m	1	2

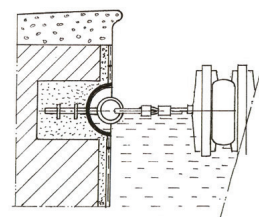
Code	Desc.	a	b	c
00100025	1200mm	1590	1200	1150
00100026	1800mm	2190	1800	1750



Lane Rope Anchor

Totally manufactured in AISI-316, Height 150mm
Dia 43mm.

Code	Description	m ³
00100028	Lane Rope Anchor	0.006



Lane Rope Anchor Cup

Made in stainless steel AISI-316, Height 150mm,
Ø43mm

Code	Description	m ³
00100027	Anchor cup for Skimmer pool	0.006



Floor Anchor Support

Made in stainless steel AISI-316, anchor support using for turning panel, false start post and back-stroke turn flag indicators.

Code	Description	m ³
00100029	Floor anchor support	0.0013



Lane Rope Tensioner Spring

Stainless steel rod with brass ferrule and glass filled polycarbonate body construction

Code	Description	m ³
00100030	Lane Rope Tensioner spring	0.0013



Competition Equipments



► Indicators

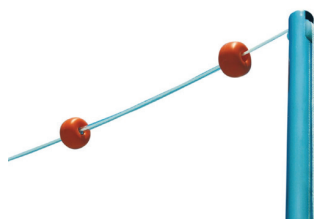


Backstroke Turn Indicator

Backstroke indicator pole made in stainless steel AISI 316 with Ø43mm, and thickness of 1.5 mm. polyester rope and thick PVC flags in red (4 nos - every meter).

Set of 4 Posts

Code	Description	m ³
00100031	Backstroke turn indicator	0.011



False Start Indicator

The false start poles and rope set features a quick release cam on the poles to allow rapid false start indication to swimmers. And its including with SSpoles false start rope and pool deck fitting.

Set of 2 Posts

Code	Description	m ³
00100034	False Indicator 2 Posts	0.02

Turning Panel

The turning panel is used for swimming speed reasons. The swimming gain by pushing off the panel after each turn at the end of the pool. The panel is 2,50m long and 0,30m wide, composed of pure stainless steel frame rated AISI-316 and white waterproof gridded vertical panel of 30cm width.

Code	Description	m ³
00100037	Turning panel 2.00 x 0.30m	0.10



Kit Rope With Pennant

Code	Description	m ³
00100032	Rope Kit 21m	0.011
00100033	Rope Kit 25m	0.011



Kit Rope With Floats

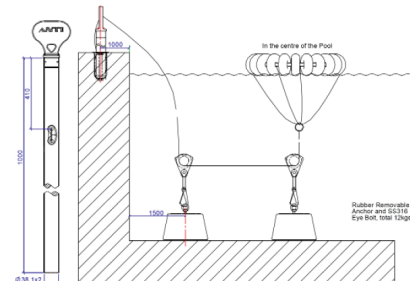
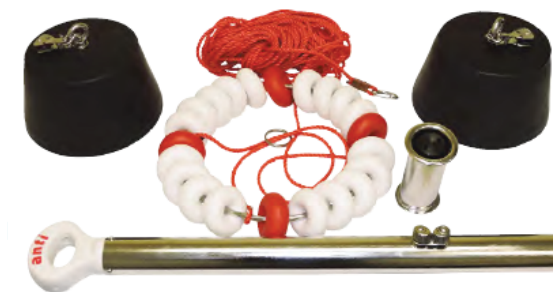
Code	Description	m ³
00100035	Rope Kit 21m	0.03
00100036	Rope Kit 25m	0.05



Competition Equipments



► Polo Game and Bulkhead



Polo Game Starter

Polo game start up set ball release system provides a consistent and accurate start to every game. The starting ring is held in place inside the playing field by easily removable weight resting on the pool floor. Each weight is 12kg. The SS316 pole is anchored to the pool deck by the SS316 deck hole anchor. The start rope attaches to the SS316 pole quick release jaws.

Code	Description	Weight	Volume
AWE324	Polo game start up	15kg	0.3m ³
AWE323	Water polo lane Midi 188 men's and women's	175kg	3m ³
AWE322	Water polo lane Maxi 188 men's and women's	300kg	4.7m ³

Movable Bulkhead

The anti wave Movable Bulkhead sets the international standard for Bulkhead pool configuration and programmability. Movable bulkhead has developed a high precision corrosion resistant bulkhead that successfully meets all international regulations including FINA. Bulkhead utilise cutting edge production techniques to ensure precision tolerances and a clean aesthetic design that is complimentary to the Pool Deck.



Competition Equipments



► Swimming Training Equipments



Floating Swim Belt Junior 5 Elements

Code	Description
00100040	Floating swim belt junior (3-6 year) Weight 12-20kg, Element size 19x9x3cm

Floating Swim Belt 4 Elements

Code	Description
00100041	Floating swim belt (6-12 year) Weight 30-50kg, Element size 19x9x3cm



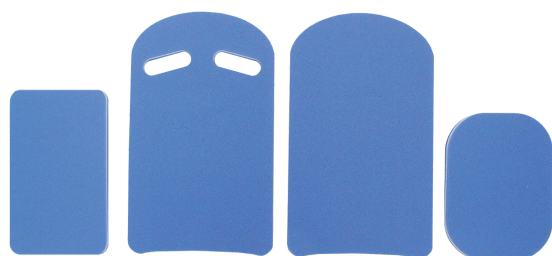
Floating Swim Belt Monoblock

Code	Description
00100042	Floating swim belt monoblock (3-6 year) Weight 12-20kg, Element size 50x12x3cm
00100043	Floating swim belt monoblock (6-12 year) Weight 30-50kg, Element size 60x13.5x3cm

Flexibeam round pool noodle

Code	Description
00100044	Flexibeam round pool noodle in different colours size 152 x 6.5cm

Competition Equipments



Kickboard Eurokick small

Code	Description
00100045	Kickboard Eurokick small 29x22x3cm
00100046	Kickboard Eurokick Medium 38x23x3cm
00100046	Kickboard Eurokick Larg 47x28x3cm

Kickboard Larg

Code	Description
00100045	Super Kickboard Medium 38x23x4cm
00100046	Super Kickboard large 45x28x4cm
00100046	Super Kickboard 49x28x4cm

